

Enclosed is my gift of  
\$ \_\_\_\_\_

My check is enclosed.  
Please make your check payable to:  
The ESSCO-MGH Breast Cancer Research Fund.

Please charge my gift to my credit card:

\_\_\_ AMEX    \_\_\_ VISA    \_\_\_ MC    \_\_\_ Discover

Card # \_\_\_\_\_ Exp. \_\_\_\_\_

Date: \_\_\_\_\_

Signature: \_\_\_\_\_

Dollar Value \$: \_\_\_\_\_

Name \_\_\_\_\_

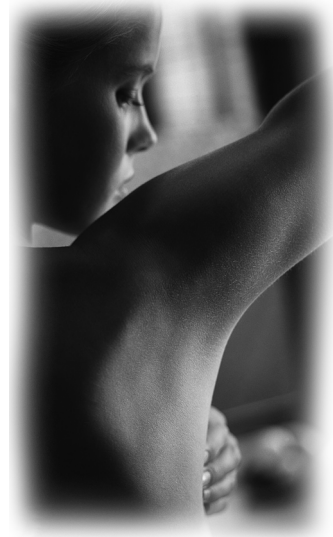
Address \_\_\_\_\_

City \_\_\_\_\_ State \_\_\_\_\_ Zip \_\_\_\_\_

Tel: ( \_\_\_ ) \_\_\_\_\_

Email address: \_\_\_\_\_

Your gift is tax deductible to the extent provided by the law. Should you have any questions or wish to receive additional information about the ESSCO-MGH Breast Cancer Research Fund, please call the Development Office at (617) 726-2200.



## About The Fund

The ESSCO-MGH Breast Cancer Research Fund was established in December of 1994 by Albert Cohen, then-CEO of Electronic Space Systems Corporation (ESSCO). At that time, Cohen's 33-year-old daughter had been diagnosed with breast cancer and treated at the Massachusetts General Hospital. Cohen established the fund to support the breast cancer research efforts at the MGH to speed progress towards a cure.

100% of all donations to the ESSCO-MGH Breast Cancer Research Fund go directly to funding vital breast cancer research at the MGH.

## The Research

Through the support of the ESSCO-MGH Breast Cancer Research Fund, researchers in the Division of Surgical Oncology are collaborating with colleagues in the MGH Cancer Center, the Gillette Center for Women's Cancers, and other research groups on an array of research projects. These include studies of the molecular processes involved in breast cancer cell growth inhibition with an emphasis on evaluating Mullerian Inhibiting Substance (MIS) as a therapeutic cancer growth inhibitor, development of devices with the fidelity and sensitivity necessary to detect rare circulating tumor cells in the blood-stream, development of techniques to improve breast cancer screening to reduce cancer mortality rates, evaluation of novel aromatase inhibitors for cancer treatment, and more.

## How You Can Help

Thanks to donors like you, breast cancer is being detected earlier and more women are being cured of the disease. But there is still a significant amount of work left to accomplish.

You can help by making a tax-deductible donation to the fund, today.

Please complete the back of this form and send it along with your check or credit card information to:

The ESSCO-MGH Breast Cancer Research Fund  
c/o The MGH Development Office  
165 Cambridge Street  
Suite 600  
Boston, MA 02114

For more information, please call The MGH Development Office at (617) 726-2200 or visit [www.esscomghbcrf.org](http://www.esscomghbcrf.org)